

【特別展】HAPPYな日本美術 —伊藤若冲から横山大観、川端龍子へ—

Special Exhibition: The Japanese Art of Happiness —From Itō Jakuchū to Yokoyama Taikan and Kawabata Ryūshi

Cafe Tsubaki (lit. meaning “Camellia”), on the lobby floor, was named after the Important Cultural Property and one of the most popular masterpiece of the Yamatane collection, Hayami Gyoshū's *Camellia Petals Scattering*. With a sunny space and a pleasant view of the ginkgo tree-lined avenue outside, we offer you a variety of menu such as special Japanese and Western sweets, light meals, and original beverages.

Among others, our wagashi, which is made by 'Kikuya' confectionary with a long and distinguished history in Aoyama, Tokyo, and inspired by the paintings from the exhibition on view, is another piece of art in this museum. The tranquil atmosphere of our cafe, with the refined Italian furniture by Cassina IXC., is a delightful place for you to be relaxed after enjoying the exhibition.

雲海 Unkai

山種美術館設立に際して大観から特別に購入を許された《心神》。雲海に包まれた気高い富士の姿をきんとんと羊羹で表しました。
(黒糖風味大島あん) Smooth red bean paste with brown sugar (Kokutoiri-an)



横山大観
《心神》
Yokoyama Taikan
Divine Spirit: Mt. Fuji



えびす鯛 Ebisu-Dai

栖鳳の鯛の絵と、恵比寿の地名をかけて、おめでたい和菓子銘としました。あんは風味豊かな胡麻入りのこしあんです。
(胡麻入りこしあん) Smooth red bean paste with ground sesame seeds (Gomairi-an)



竹内栖鳳
《艸影帖・色紙十二月のうち「鯛(一月)」》
Takeuchi Seihō
The Twelve Months in Paintings:
Sea Bream (January)



吉祥 Kisshō

動物画を得意とする五雲が描いた丹頂鶴。古くより、長寿のシンボルとされてきた鶴の姿をイメージした和菓子です。
(こしあん) Smooth red bean paste (Koshi-an)

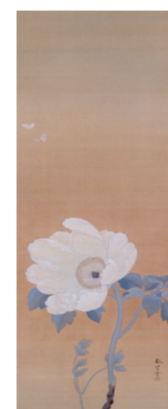


西村五雲
《松鶴》
Nishimura Goun
Cranes and Pine Tree



百花の王 Hyakka-no-Ō

古来、花の王とも称され、愛でられてきた牡丹。春草が描いた優雅な白牡丹をモチーフにしました。中は鮮やかな黄緑色の柚子あんです。
(柚子あん) Smooth bean paste with yuzu citron flavor (Yuzu-an)



菱田春草
《白牡丹》
Hishida Shunsō
White Peony



吉日 Kichijitsu

扇型の練切りの上に、松竹梅を取り合わせた華やかでめでたい一品。杏の風味と菊家特製のこしあんをお楽しみいただけます。
(杏入り練切り・こしあん) Smooth red bean paste with shredded apricots (Anzuiri-an)



小林古径
《松竹梅》
Kobayashi Kokei
Pine, Bamboo, and Plum



※作品はすべて山種美術館蔵

※All works are the property of the Yamatane Museum of Art.

[Menu]

- ◎ Regular Coffee (Smart Coffee, Kyoto) ¥750
- ◎ Matcha ¥850
- ◎ Mariko Black Tea ¥750
- ◎ Tea of the Seasonal ¥750
- ◎ Wagashi Set ¥1,250
- ◎ Matcha Wagashi Set ¥1,350
- ◎ Cake set ¥1,400
- ◎ Seasonal Nyū-men ¥1,350

Take-away service is available only for more than 2 pieces. ¥710 per piece